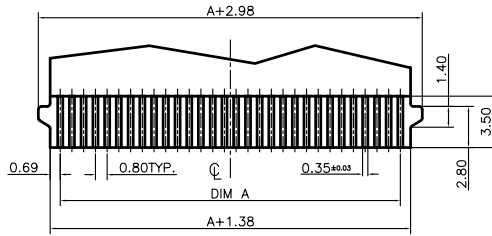
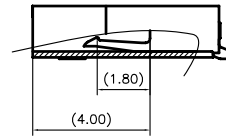
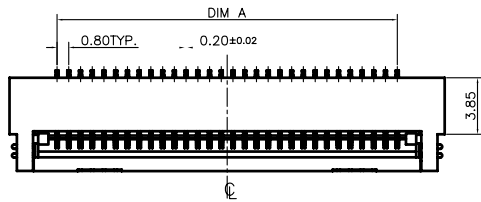


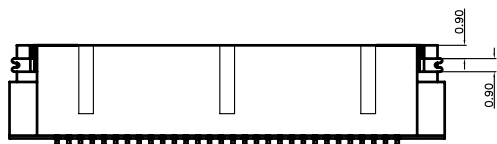
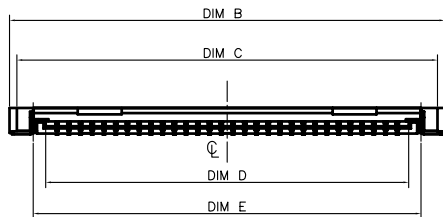
RECOMMENDED PCB LAYOUT
GENERAL TOLERANCE ±0.05



RECOMMENDED FPC/FFC DIMENSIONS
GENERAL TOLERANCE ±0.03



SCALE 6:1



NOTES:

- MATERIAL:
 - HOUSING: THERMOPLASTIC, HIGH TEMP., UL94V-0.
 - ACTUATOR: THERMOPLASTIC, HIGH TEMP., UL94V-0.
 - CONTACT: COPPER ALLOY
 - FITTING NAIL: COPPER ALLOY
- FINISH:
 - CONTACT:
 - 50~100u" NICKEL UNDERPLATING OVERALL.
 - 1:GOLD FLASH OVERALL.
 - N:MATT TIN PLATING OVERALL.
 - FITTING NAIL:
 - 90~120u" MATT TIN PLATING ON SOLDER TAILS(LEAD FREE).
 - 50~100u" NICKEL UNDERPLATING OVERALL.
- REFLOW SOLDER CAPABLE TO 260°C PER ACES SPEC.
- SPEC. PLS. REFER TO PS-51518-xxxx-xxx
- PACKAGE PLS. REFER TO 51518-xxxx-TRP

6. PART NUMBER

51518-XXX X X-XXX

	HOUSING MATERIAL & COLOR	ACTUATOR MATERIAL & COLOR	PACKAGE
001	HALOGEN FREE PLASTIC & NATURAL	HALOGEN FREE PLASTIC & BLACK	51518-XXXXR

NO OF CKT

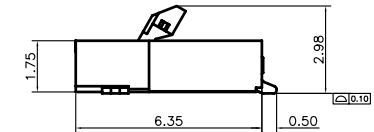
PACKING

0: TAPE & REEL

1: TUBE

PLATING

1: GOLD FLASH(LEAD FREE)



SCALE 6:1

CKT	DIM A	DIM B	DIM C	DIM D	DIM E
24	18.40	24.88	23.88	19.85	21.75
26	20.00	26.48	25.48	21.45	23.35
30	23.20	29.68	28.68	24.65	26.55

一般公差 TOLERANCES X ±0.5 .XX ±0.15 X ±0.25 .XXX ±0.1 ANGLES ±2°					
檢驗尺寸標示 SYMBOLS ⊕ ⊗ INDICATE CLASSIFICATION DIMENSION ⊕ MARK IS CRITICAL DIM. ⊗ MARK IS MAJOR DIM.		品名 (TITLE) 0.8 PITCH EASY ON FPC Conn. SMT R/A B/C TYPE		製圖 (DR) 審核 (CHKD) 核准 (APPD)	
表面處理 (FINISH)		比例 (SCALE)		單位 (UNITS)	
				mm	
				張數 (SHEET) OF 圖號 (DWG NO.)	
				SIZE A4	
				REV	